

Пользователь /Username	puhra
Дата / Date	14.12.2016 03:12:57
Имя файла / Filename	Размер 36 окружность груди 84 см, талия 66 см, бедра 90 см
Формат / Format	A4
Кол-во листов / Pages	16

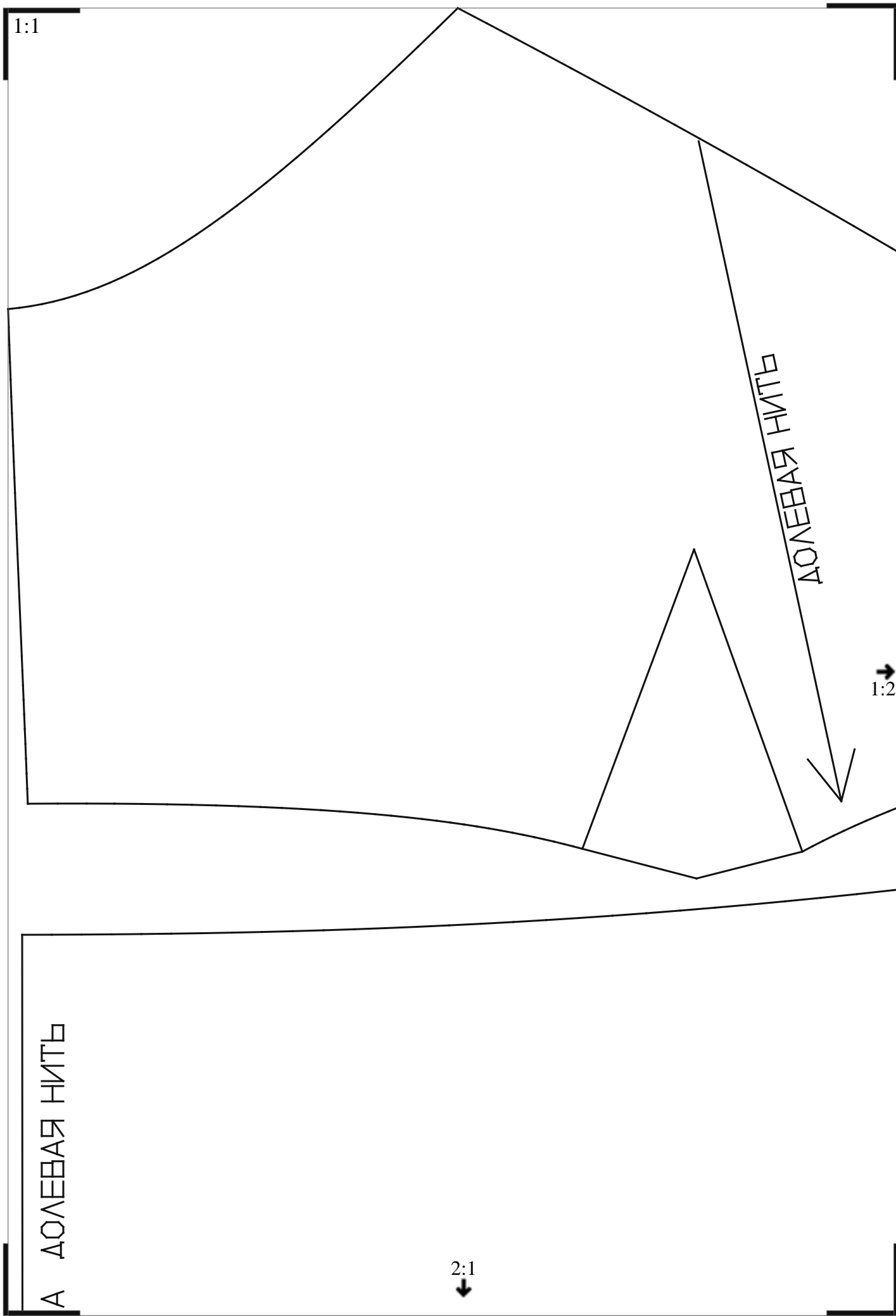


ВАЖНО

При печати этого PDF файла «Масштабирование страницы» или «Page scaling» должно быть равно «Нет» или «No»

Печать производите в «Истинный размер» или «Actual size»

Подробнее смотрите в разделе «Помощь» - «Печать PDF файлов»



1:2



1:1

ЛИНИЯ СЕРЕДИНЫ ПЕРЕДА

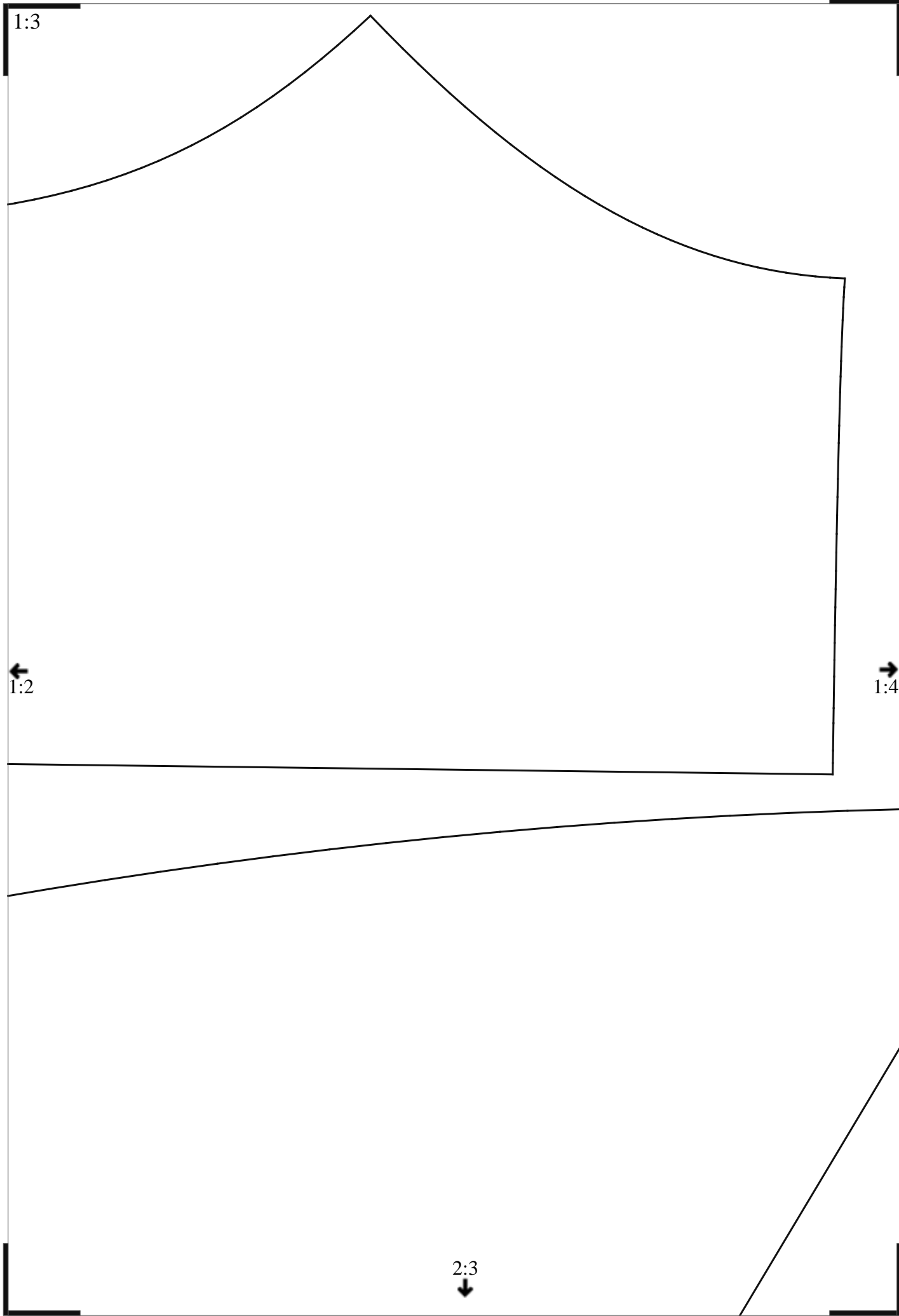
ПЛИН КВАДРАТОМ БИЛ АНИЧЕДРЕД КАНДУЕ



1:3

2:2





1:4



1:3



2:4

2:1

1:1



ТАЛИЯ

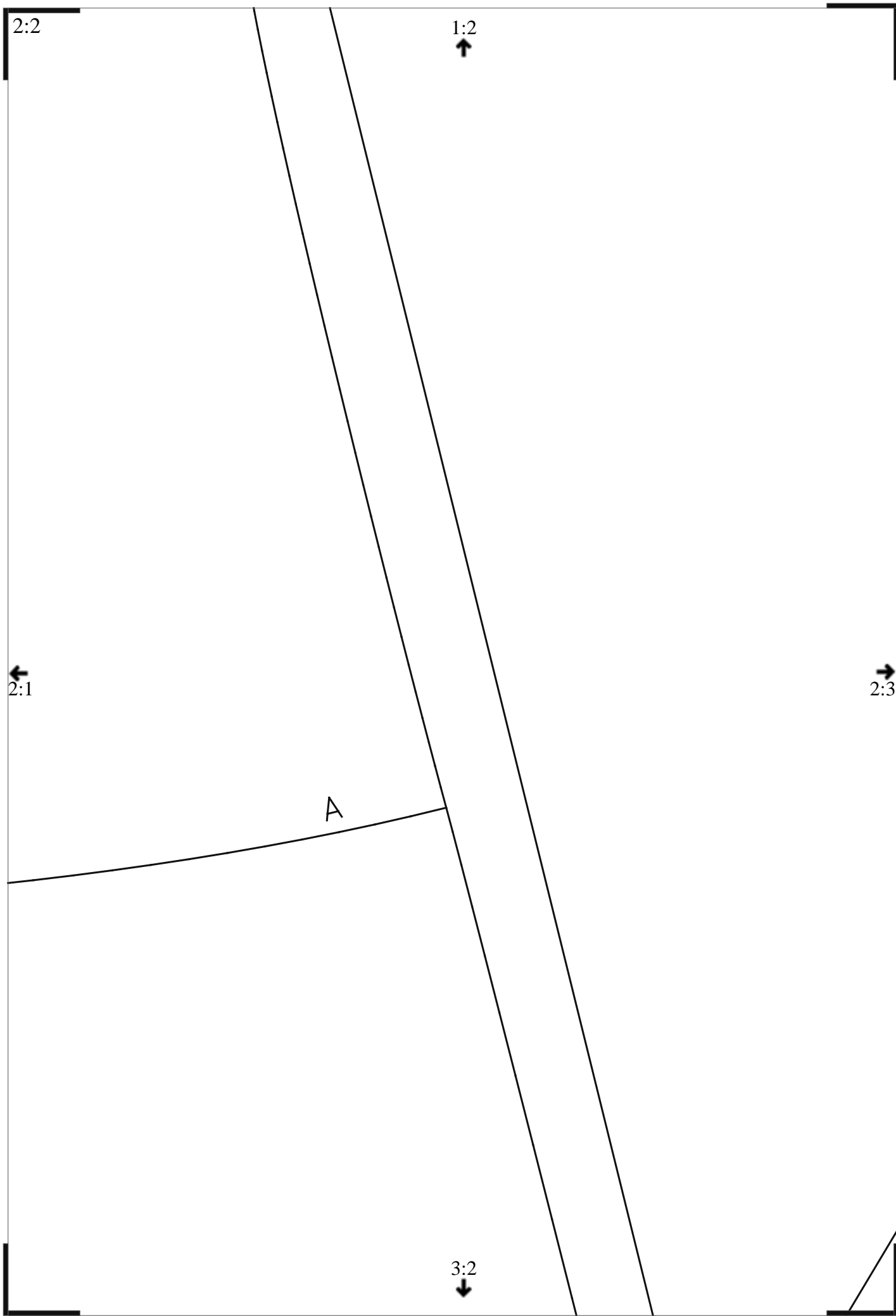
СПИНКА

2:2



3:1





2:2

1:2



2:1



2:3

A

3:2



2:3

1:3



В ДОНЕБАС НІТЬ



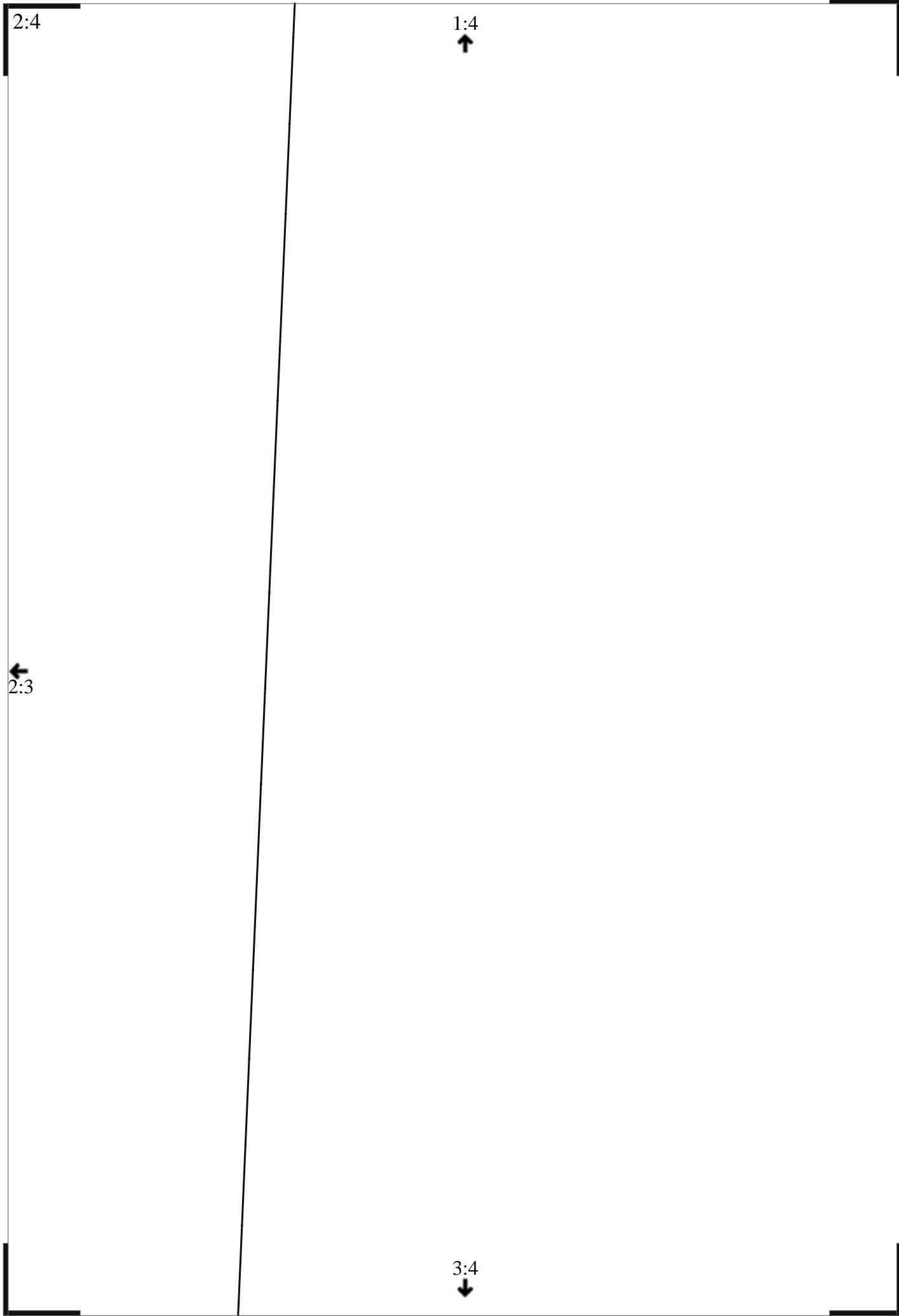
2:2

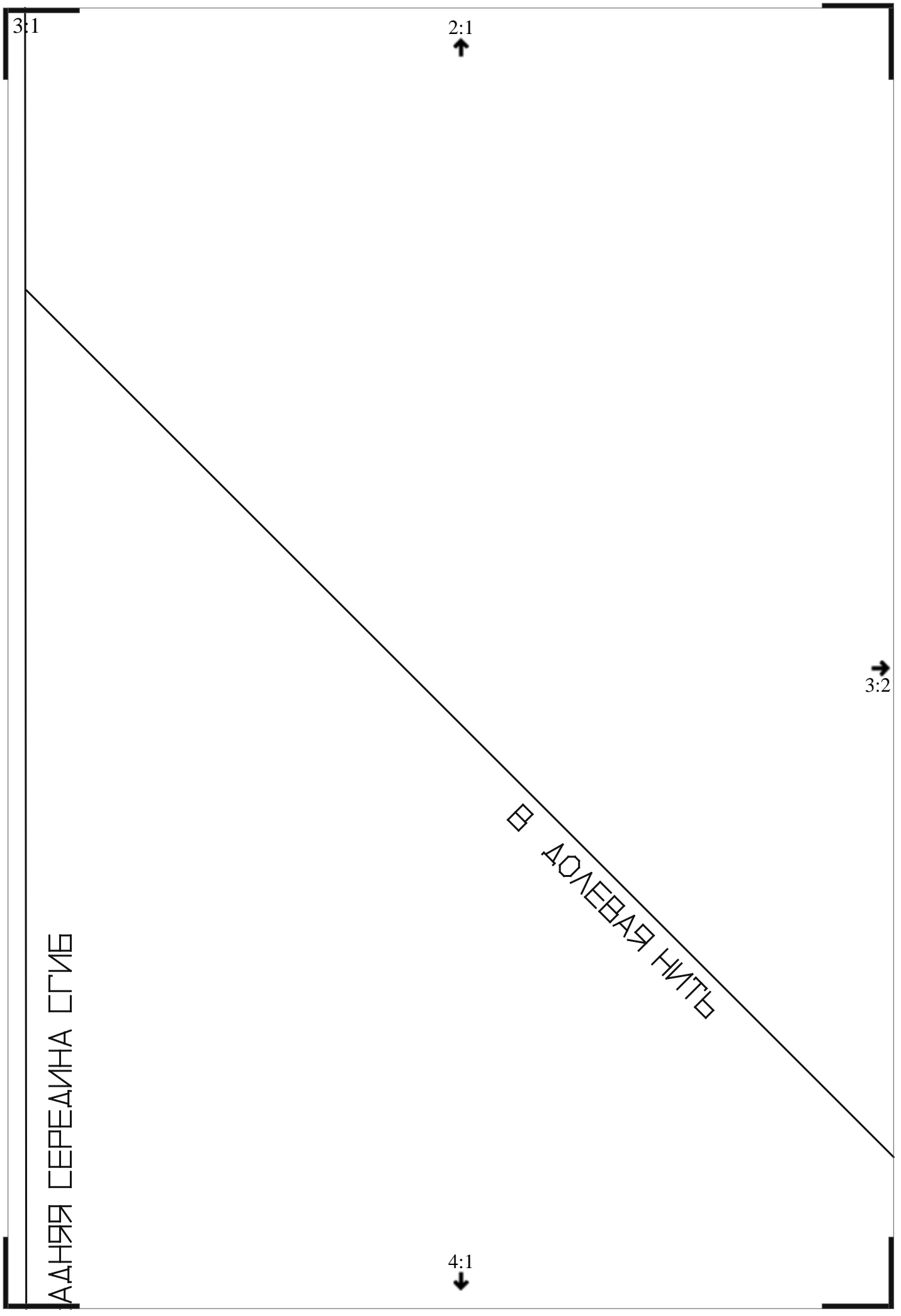


2:4

3:3







3:2

2:2
↑

←
3:1

→
3:3

А ДОВЕРЯЯ НИТЬ

МНН

4:2
↓

3:3

2:3



A

3:2



3:4



4:3



ТАВАН
ПЕРЕДНЯ ПЕРЕДА СТУБ

3:4

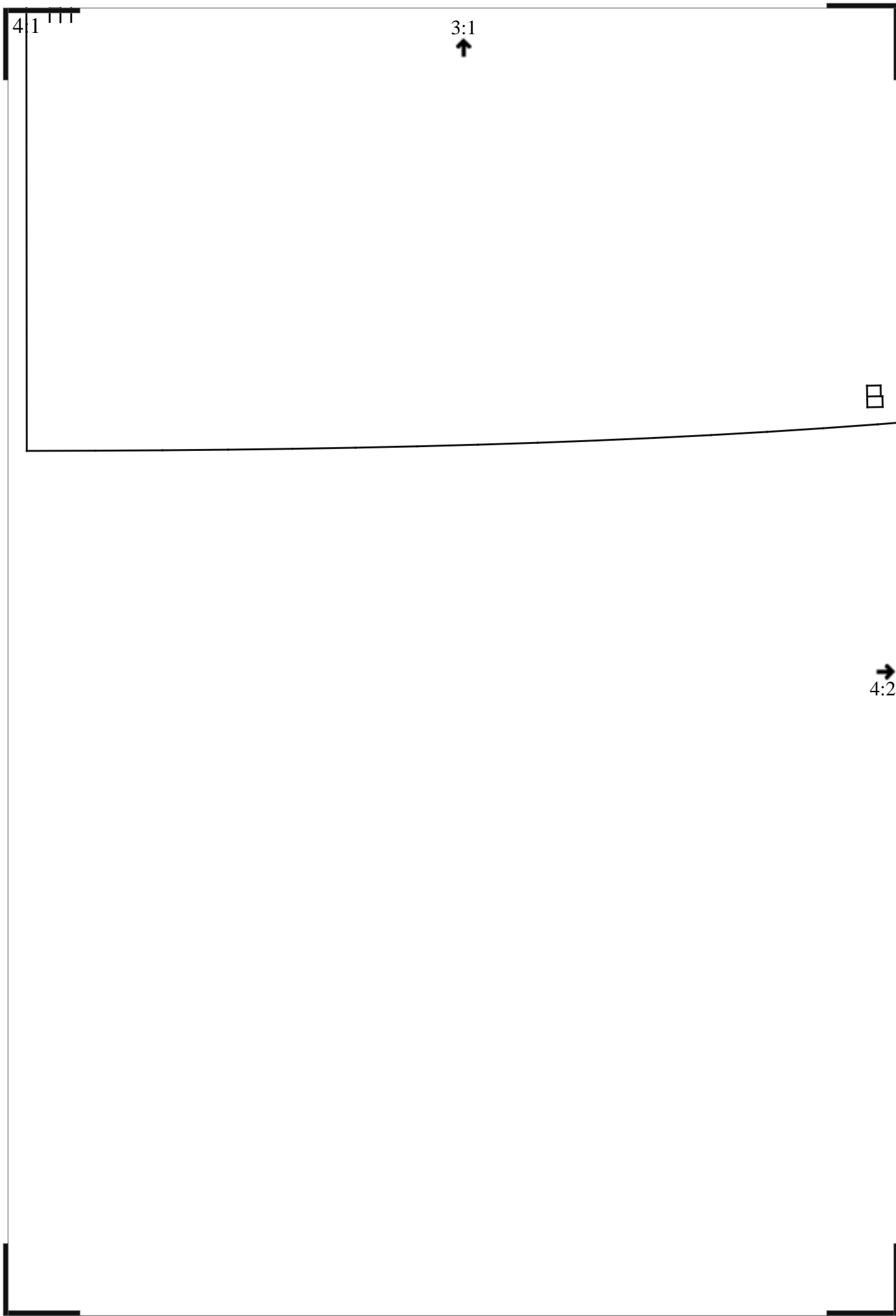
2:4



3:3

4:4



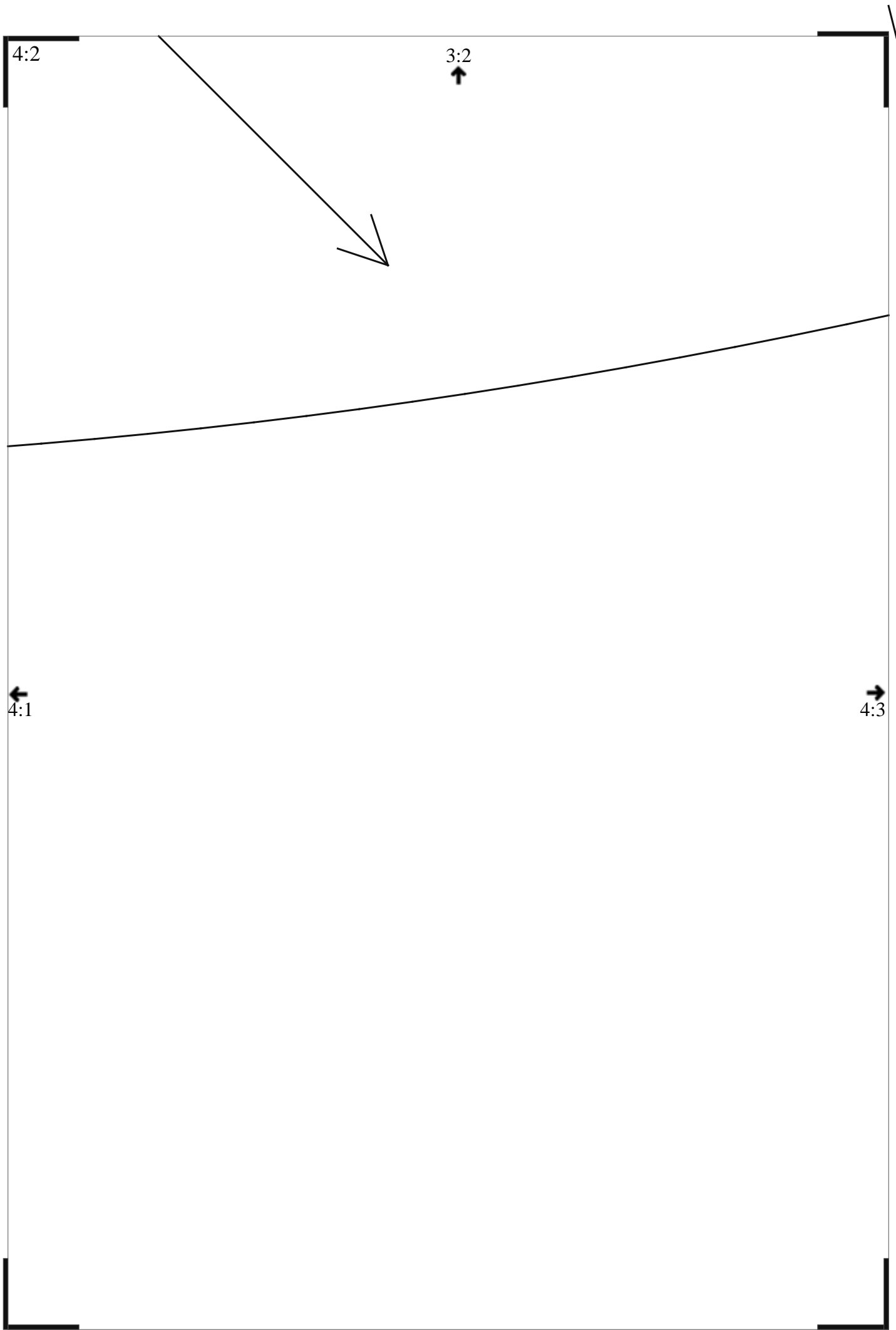


4:1

3:1
↑

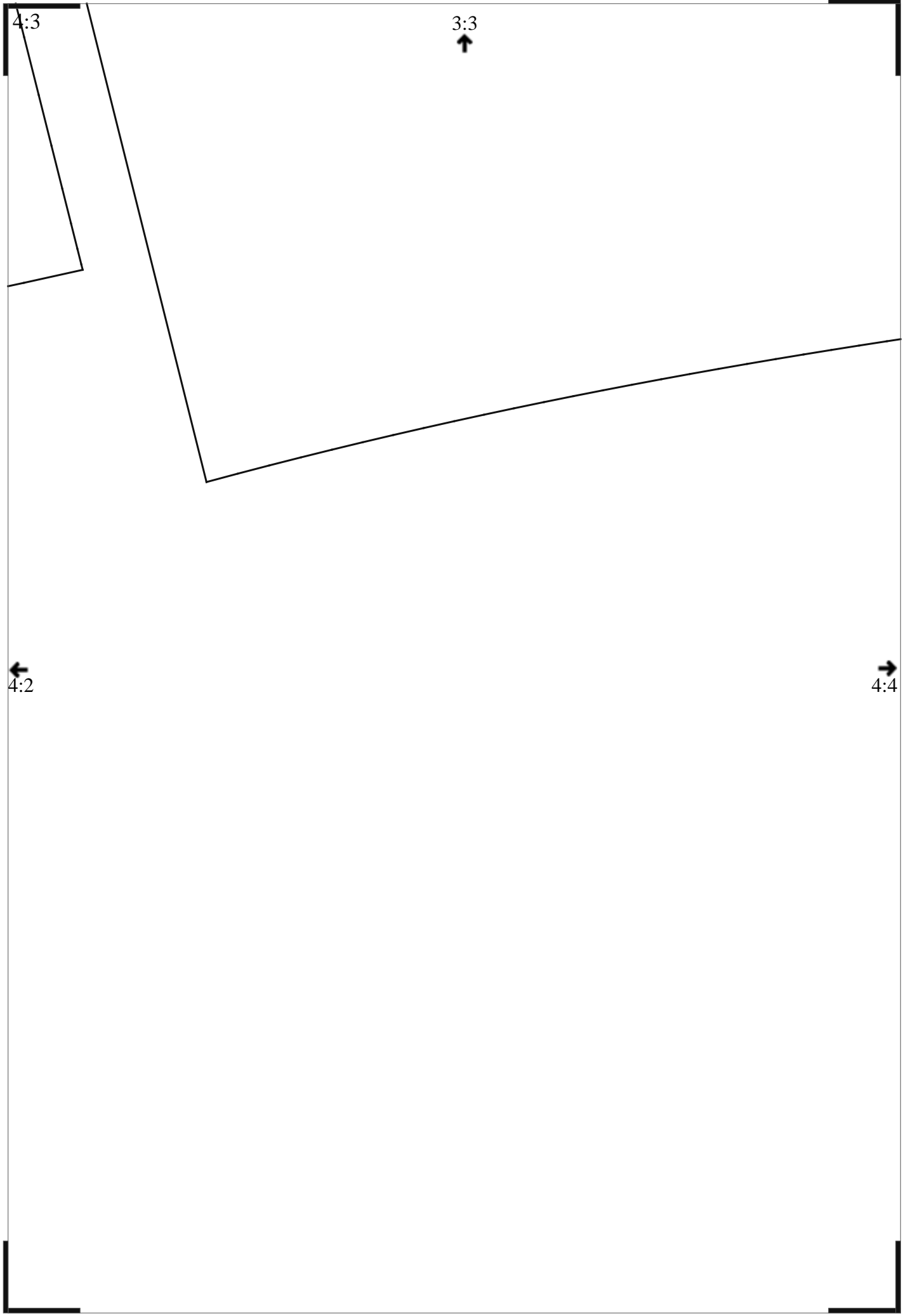
8

→
4:2

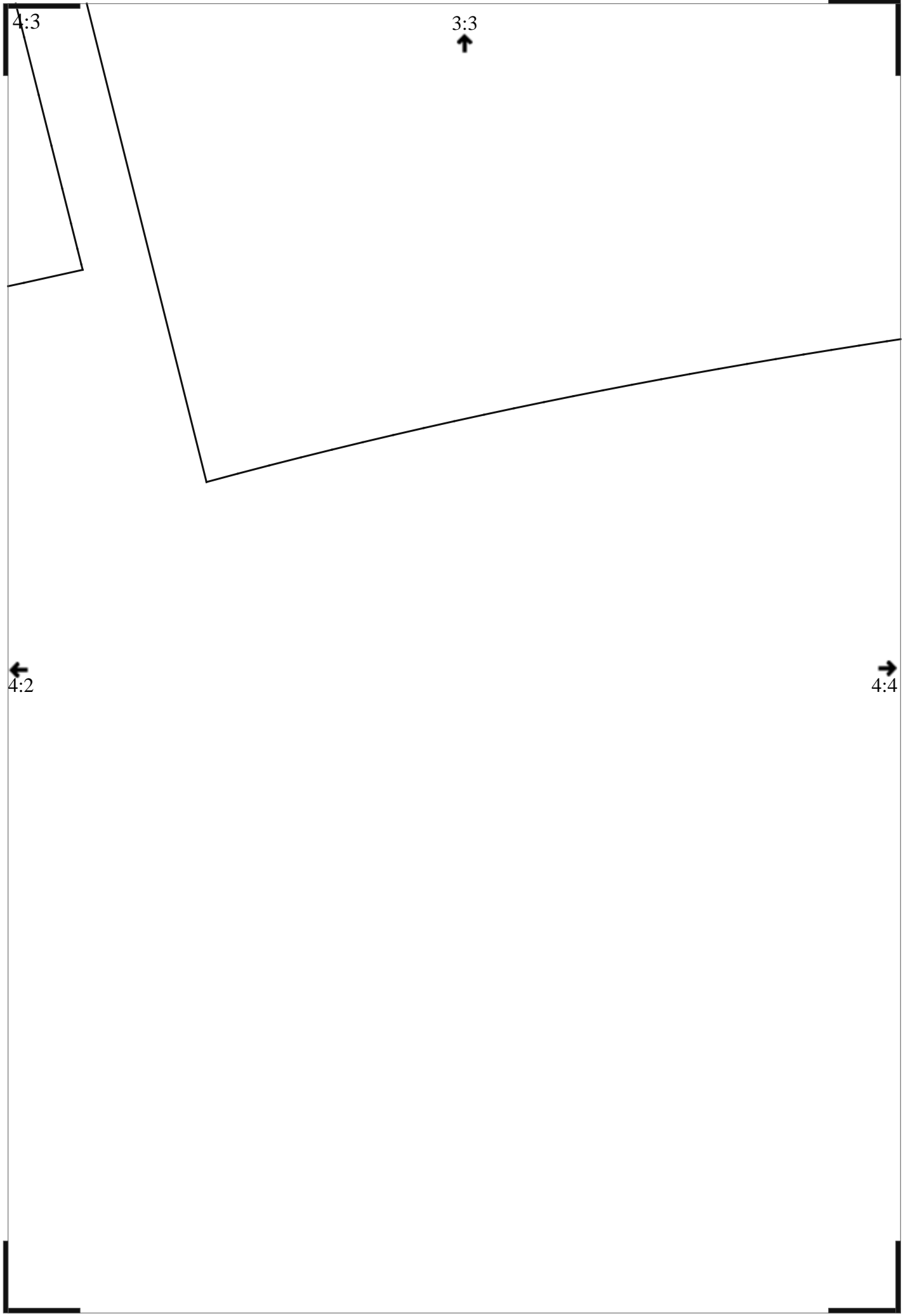


The diagram illustrates a path starting from a top-left corner and ending at a bottom-right corner. The path is composed of several segments. At the top-left corner, there is a label $4:3$. As the path moves downwards and to the right, it passes through a point labeled $3:3$ with an upward-pointing arrow. Further down, the path turns left and then right, passing through a point labeled $4:2$ with a leftward-pointing arrow. Finally, the path reaches the bottom-right corner, passing through a point labeled $4:4$ with a rightward-pointing arrow. The path is represented by a solid black line, and the background is a light gray color.

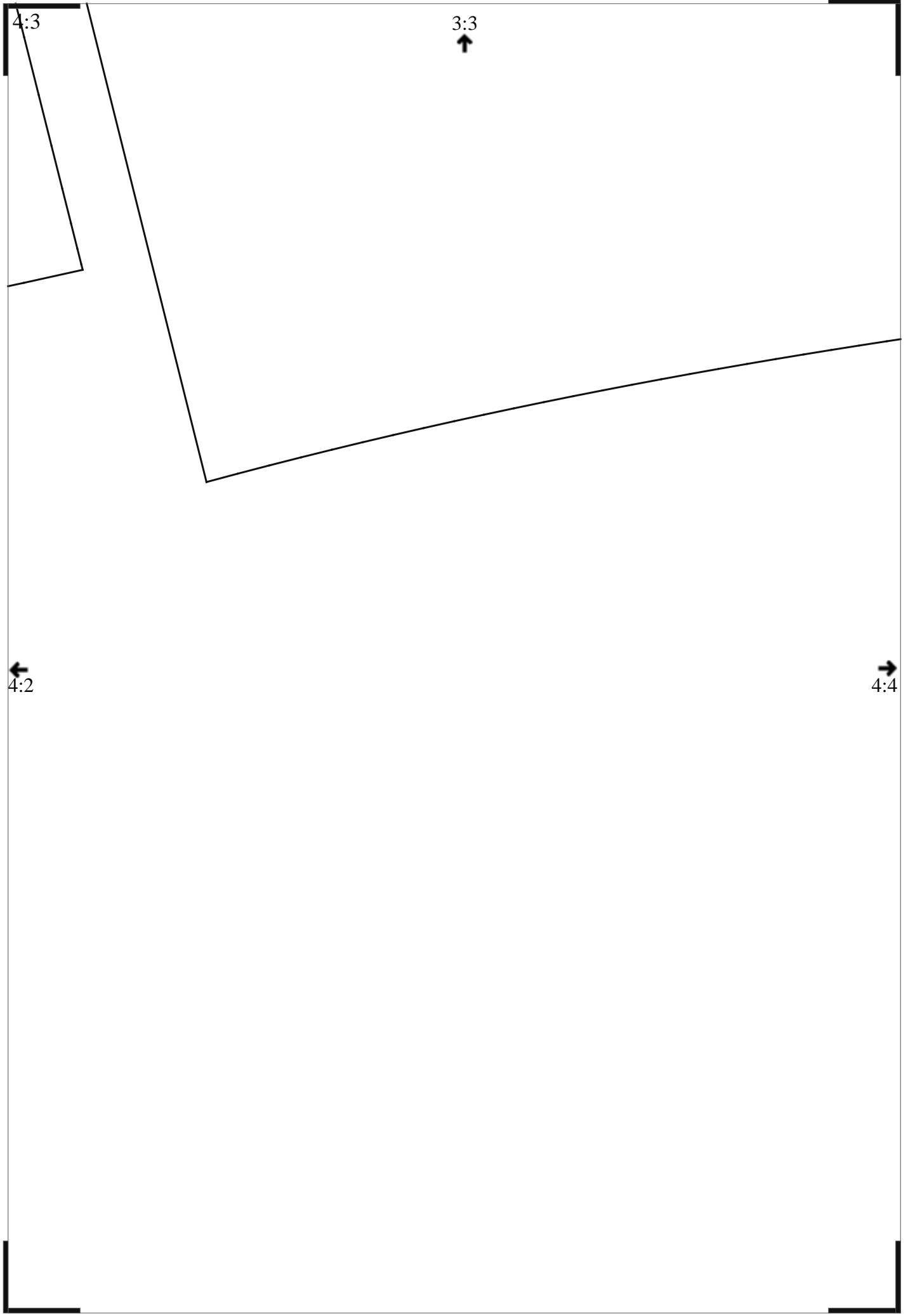
The diagram illustrates a path starting from a top-left corner and ending at a bottom-right corner. The path is composed of several segments. At the top-left corner, there is a label $4:3$. As the path moves downwards and to the right, it passes through a point labeled $3:3$ with an upward-pointing arrow. Further down, the path turns left and then right, passing through a point labeled $4:2$ with a leftward-pointing arrow. Finally, the path reaches the bottom-right corner, passing through a point labeled $4:4$ with a rightward-pointing arrow. The path is shown as a series of connected line segments, with some segments being straight and others being curved. The overall shape of the path is irregular, with a significant dip in the middle.



The diagram illustrates a path starting from a top-left corner and ending at a bottom-right corner. The path is composed of several segments. At the top-left corner, there is a label $4:3$. As the path moves downwards and to the right, it encounters a label $3:3$ with an upward-pointing arrow. Further down the path, there is a label $4:2$ with a leftward-pointing arrow. Finally, at the bottom-right corner, there is a label $4:4$ with a rightward-pointing arrow. The path itself is a series of connected line segments, with a notable change in direction around the $3:3$ and $4:2$ labels.



The diagram illustrates a path starting from a top-left corner and ending at a bottom-right corner. The path is composed of several segments. At the top-left corner, there is a label $4:3$. As the path moves downwards and to the right, it encounters a label $3:3$ with an upward-pointing arrow. Further down the path, there is a label $4:2$ with a leftward-pointing arrow. Finally, at the bottom-right corner, there is a label $4:4$ with a rightward-pointing arrow. The path itself is a series of connected line segments, with a notable change in direction around the $3:3$ and $4:2$ labels.



4:4

3:4



4:3